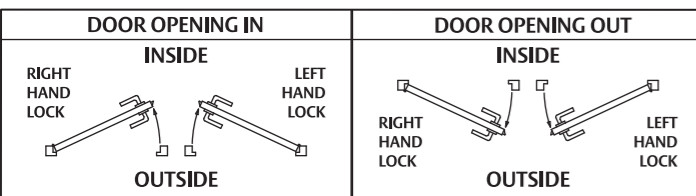


3770 SERIES MORTICE LOCK

SETTING AND OPERATING INSTRUCTIONS

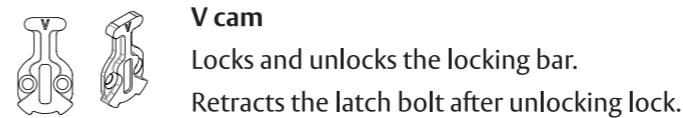
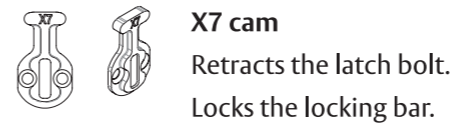
HAND OF DOOR ACCORDING TO ENGLISH PRACTICE



- Determine hand of lock required from chart above.

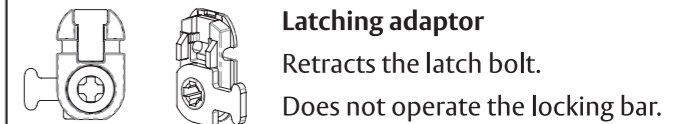
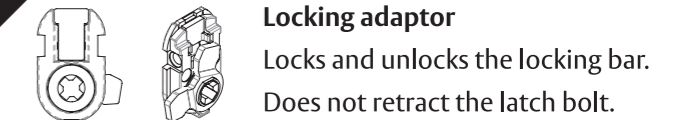
- Disregard instructions referring to features not required.
- The lock is supplied in passage mode. The hold back and anti-lockout functions are de-activated.
- To install the lock, refer to the **MOUNTING INSTRUCTIONS**.
- Refer to **FUNCTION CHART** on reverse of this instruction to select required settings, cams and adaptors.

B CYLINDER CAM SELECTION



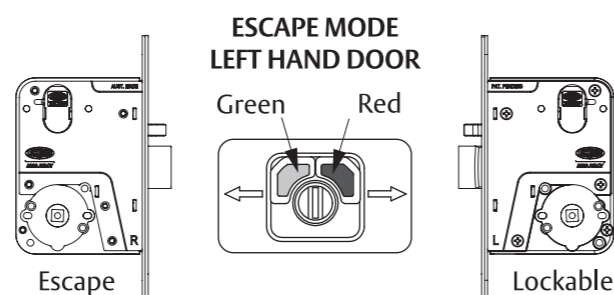
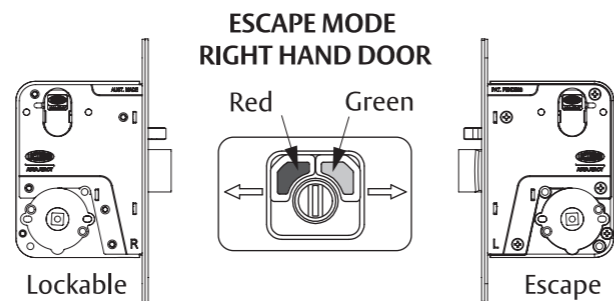
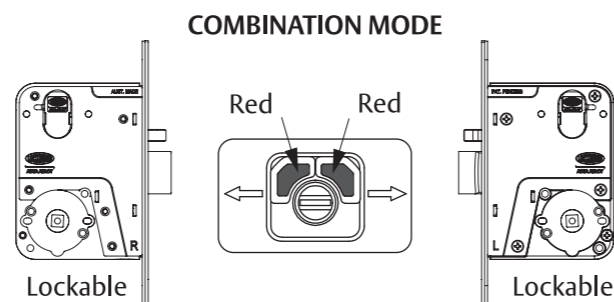
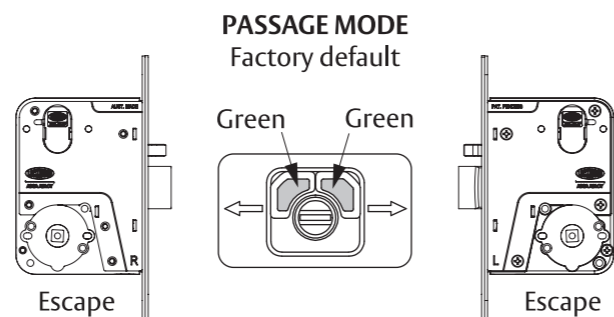
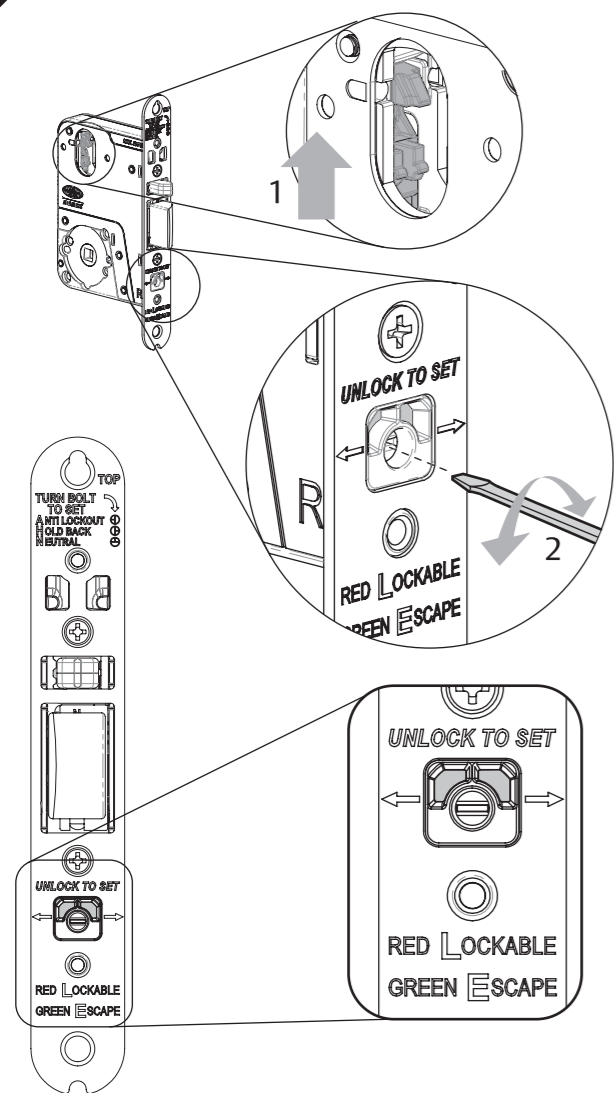
- Fit the required cam to the cylinder and install into lock according to the **MOUNTING INSTRUCTIONS**.

C ADAPTOR SELECTION



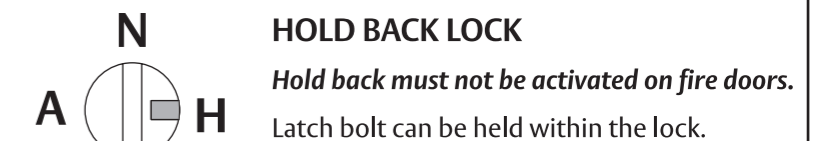
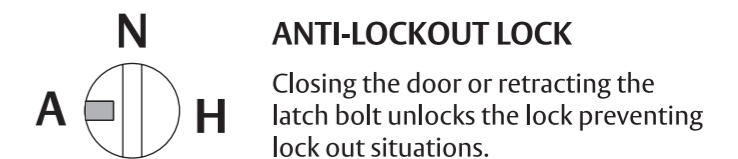
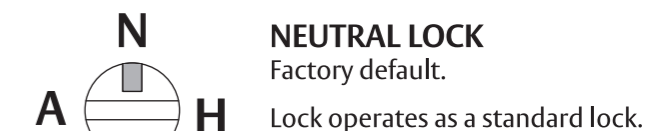
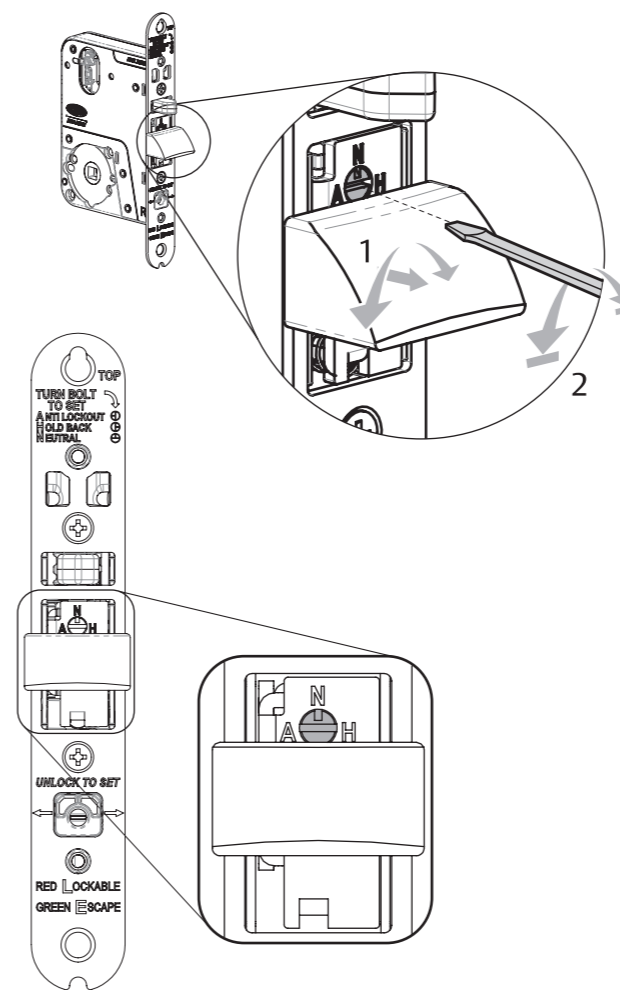
- Select adaptor required and install into lock according to the **MOUNTING INSTRUCTIONS**.

A HUB SETTING



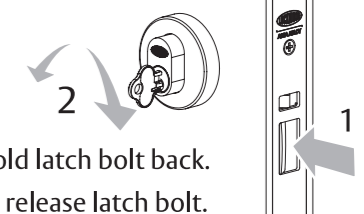
- Ensure locking bar is in the unlocked (up) position. Hubs cannot be set while lock is locked.
- Using a 4mm flat blade screwdriver, rotate the dial until the required configuration is achieved. Dial can be rotated in either direction.
- RED** - handle is lockable. Only opened by handle when locking bar is unlocked (up).
- GREEN** - opened by handle at all times.

D ANTI-LOCKOUT OR HOLDBACK SELECTION



To activate : Depress latch bolt and lock locking bar.
To de-activate : Unlock locking bar

- The anti-lockout and hold back selection is located under the latch bolt.
- Pull latch bolt forward and rotate 90°.
- Using a 4mm flat blade screwdriver, rotate to the required function.
- NOTE :** Selector can only be rotated 90° in either direction from the (N) neutral position.
- Rotate the latch bolt back to vertical ensuring the correct latch bolt handing.



Nightlatches

Function description	External cam or adaptor	Hub setting	Lock function setting	Locking bar position	Internal cam or adaptor
3770-T Nightlatch with turn <i>Turn knob inside.</i> Inside : Opened by turn knob.					
3770X- Nightlatch with cylinder <i>Single cylinder.</i> Outside : Opened by key.					
3770XT Nightlatch with cylinder & turn <i>Cylinder and turn knob.</i> Outside : Opened by key. Inside : Opened by turn knob.					
3770XX Nightlatch with double cylinder <i>Double cylinder.</i> Outside : Opened by key. Inside : Opened by key.					

Only required when using a 3772 lock

Escape locks

Function description	External cam or adaptor	Hub setting	Lock function setting	Locking bar position	Internal cam or adaptor
3772-- Escape lock Outside : Handle always rigid. Inside : Opened by handle at all times.					
3772-T Escape privacy lock <i>Emergency button and turn knob.</i> Outside : Opened by handle when unlocked. Emergency button locks or unlocks outside handle - operated by screwdriver or coin. Inside : Opened by handle at all times. Turn knob locks or unlocks outside handle.					
3772X- Key entry escape lock <i>Single cylinder.</i> Outside : Opened by key at all times. Handle always rigid. Inside : Opened by handle at all times.					
3772XT Key entry escape lock & turn <i>Cylinder and turn knob.</i> Outside : Opened by key at all times. Opened by handle when unlocked. Key locks outside handle. Inside : Opened by handle at all times. Turn knob locks or unlocks outside handle.					
3772V- Anti-vandal escape lock <i>Single cylinder.</i> Outside : Opened by handle when unlocked. Key locks or unlocks outside handle and retracts bolt after unlocking lock. Inside : Opened by handle at all times. Turn knob locks or unlocks outside handle.					
3772-TA Anti-lockout escape privacy lock* <i>Emergency button and turn knob.</i> Outside : Opened by handle when unlocked. Emergency button locks or unlocks outside handle - operated by screwdriver or coin. Inside : Opened by handle at all times. Turn knob locks or unlocks outside handle.					
3772VTA Anti-lockout anti-vandal escape lock & turn* <i>Cylinder and turn knob.</i> Outside : Opened by handle when unlocked. Key locks or unlocks outside handle and retracts bolt after unlocking lock. Inside : Opened by handle at all times. Turn knob locks or unlocks outside handle.					
3772XVH Holdback key entry lock & cylinder # <i>Double cylinder.</i> Outside : Opened by key at all times. Opened by handle when unlocked. Key locks outside handle. Inside : Opened by handle at all times. Key locks or unlocks outside handle and retracts bolt after unlocking lock.					
3772V-H Holdback anti-vandal escape lock # <i>Single cylinder.</i> Outside : Opened by handle when unlocked. Key locks or unlocks outside handle and retracts bolt after unlocking lock. Inside : Opened by handle at all times.					

Escape locks cont.

Function description	External cam or adaptor	Hub setting	Lock function setting	Locking bar position	Internal cam or adaptor
3772VTH Holdback anti-vandal escape lock & turn # <i>Cylinder and turn knob.</i> Outside : Opened by handle when unlocked. Key locks or unlocks outside handle and retracts bolt after unlocking lock. Inside : Opened by handle at all times. Turn knob locks or unlocks outside handle.					
Passage latch		Only required when using a 3772 lock			
3774 Passage latch Outside : Opened by handle at all times. Inside : Opened by handle at all times.					

Combination locks

Function description	External cam or adaptor	Hub setting	Lock function setting	Locking bar position	Internal cam or adaptor
3774-T Privacy lock <i>Emergency button and turn knob.</i> Outside : Opened by handle when unlocked. Emergency button locks or unlocks both handles - operated by screwdriver or coin. Inside : Opened by handle when unlocked. Turn knob locks or unlocks both handles.					
3774XX Key entry double cylinder lock <i>Double cylinder.</i> Outside : Opened by key at all times. Handle always rigid. Inside : Opened by key at all times. Handle always rigid.					
3774XV Key entry lock & internal cylinder <i>Double cylinder.</i> Outside : Opened by key at all times. Opened by handle when unlocked. Key locks both handles. Inside : Opened by handle when unlocked. Key locks or unlocks both handles and retracts bolt after unlocking lock.					
3774V Anti-vandal lock & internal cylinder <i>Double cylinder.</i> Outside : Opened by handle when unlocked. Key locks or unlocks both handles and retracts bolt after unlocking lock. Inside : Opened by handle when unlocked. Key locks or unlocks both handles and retracts bolt after unlocking lock.					
3774VT Anti-vandal lock & turn <i>Cylinder and turn knob.</i> Outside : Opened by handle when unlocked. Key locks or unlocks both handles and retracts bolt after unlocking lock. Inside : Opened by handle when unlocked. Turn knob locks or unlocks both handles.					
3774-TA Anti-lockout privacy lock * <i>Emergency button and turn knob.</i> Outside : Opened by handle when unlocked. Emergency button locks or unlocks both handles - operated by screwdriver or coin. Inside : Opened by handle when unlocked. Turn knob locks or unlocks both handles.					
3774VA Anti-lockout anti-vandal lock & cylinder # <i>Double cylinder.</i> Outside : Opened by handle when unlocked. Key locks or unlocks both handles and retracts bolt after unlocking lock. Inside : Opened by handle when unlocked. Key locks or unlocks both handles and retracts bolt after unlocking lock.					
3774VH Holdback key entry lock & cylinder # <i>Double cylinder.</i> Outside : Opened by handle when unlocked. Key locks or unlocks both handles and retracts bolt after unlocking lock. Inside : Opened by handle when unlocked. Key locks or unlocks both handles and retracts bolt after unlocking lock.					
3774VTH Holdback anti-vandal lock & turn # <i>Cylinder and turn knob.</i> Outside : Opened by handle when unlocked. Key locks or unlocks both handles and retracts bolt after unlocking lock. Inside : Opened by handle when unlocked. Turn knob locks and unlocks both handles.					

* Anti-lockout lock - closing the door or retracting the latch bolt unlocks the lock preventing lock out situations.

Hold back lock - Latch bolt can be held within the lock. Hold back must not be activated on fire doors.

